

Zur Sicherung der elektrischen Anschlüsse, zur Erreichung der Schutzart IP 65.

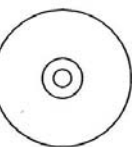
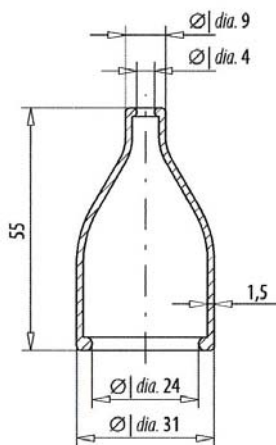


DS 20

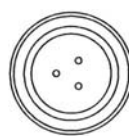
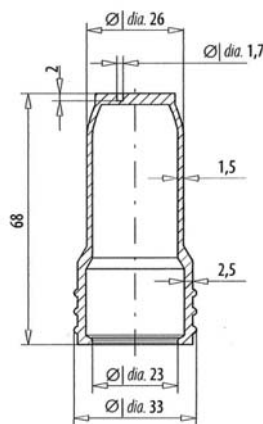
### Schutzkappen

Artikel Nr.	Ident Nr.	für Schalter	Werkstoff	Temperatur	Gewicht ca.
DS 20	103008	DS 3001	NBR 55° Sh	-25 °C bis +85 °C	8,5 g
DS 30	103009	DS 4011 - DS 4026 DS 4034 - DS 4036	NBR 55° Sh	-25 °C bis +85 °C	18,0 g
DS 40	103010	DS 214, DS 215	NBR 55° Sh	-25 °C bis +85 °C	2,5 g

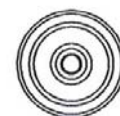
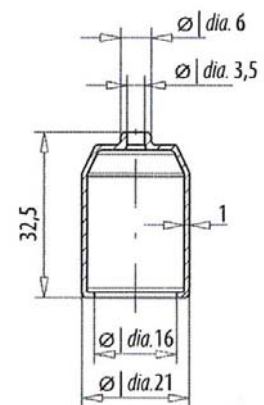
### Maße



DS 20



DS 30



DS 40